

**VALID UNTIL
30/06/2026**

**LABSOLUTE®
CRYO TUBES**

SEE PAGE 16

LABBASICS

Temperature control	2	pH measurement	18 - 19
Heating and Cooling	3	Personal protection	20 - 21
General laboratory supplies	4, 12	Waste disposal	22
Microbiology	5	Sample taking	23
Cell culture and genomics	6 - 7	Standards	24
Liquid Handling	8 - 9	Spectroscopy	25
Glassware	10 - 11	Weighing	26
Analytical measurement	13	Centrifugation	27
Chromatography	14 - 15	Stirring, shaking, mixing	28 - 30
Cooling and cryo	16	Vacuum technology	31
Heating	17	Compressors	32

INFRARED THERMOMETERS TFI 260



Non-contact measurement of the surface temperature with infrared. Ideal for fast and secure measurements of moving or energised parts and food. With batteries and a factory calibration certificate.

Specifications:

Measurement range: -60 °C to +550 °C
 Accuracy: ±2 °C or 2% (at 0 °C to +550 °C), whichever is larger
 Resolution: 0.1 °C
 Dimensions (L x W x H): 153 x 115 x 48 mm
 Power supply: 2 x 1.5V AAA, replaceable
 IP code: IP 20

Type	PK	Cat. No.
TFI 260	1	6.272 762

DIGITAL HAND HELD THERMOMETER TTX 200



For measuring the core temperature with fixed probe with cable and handle.

- Very large display with large figures
- Easy handling, easy to read
- Replaceable battery
- Factory calibration certificate

Specifications

Temperature range: -30 ... +199.9 °C
 Resolution: 0.1 °C
 Accuracy: ±0.5 °C (-30 ... +100 °C), otherwise ±1%
 Sensor length/diam.: 120 mm / 3 mm
 Dimensions (L x W x H): 127 x 60 x 16 mm (without sensor)
 Power supply: CR 2032
 Protection class: IP 55

Type	PK	Cat. No.
TTX 200	1	6.291 272

TEMPERATURE/HUMIDITY DATA LOGGER LOG 210



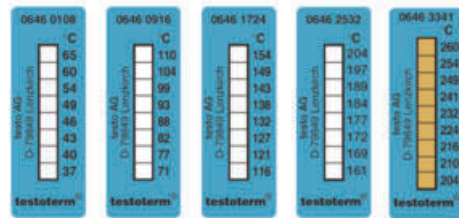
- PDF data logger with display
- Memory for 100.000 data records
- Can be used without software (pre-programmed 5-minute measurement interval)
- Automatic output as PDF file
- Adjustable measurement interval (10 seconds to 24 hours)
- Battery life approx. 4 years (with measurement interval >15 minutes)
- Includes wall bracket
- Status and alarm LEDs with audible signal (buzzer)

Specifications

Temperature
 Measuring range: -40 to +70 °C
 Accuracy: 0.1 °C
Humidity
 Measuring range: 0 to 100% RH
 Resolution: 0.1% RH
 Battery: 1 x 3.6 Volt Lithium ½ AA
 Dimensions: 91.5 x 42 x 20 mm

Type	PK	Cat. No.
LOG210	1	6.284 758

8-STEP IRREVERSIBLE TEMPERATURE STRIPS TESTOTERM®



Strips for 8 temperatures. 5 types cover the measuring range 37 to 260 °C, each strip displays 8 different temperatures. Each strip measures 50 x 18 mm.

Measuring range °C	PK	Cat. No.
37 ... 65	10	9.246 002
71 ... 110	10	9.246 003
116 ... 154	10	9.246 004
161 ... 204	10	9.246 005
204 ... 260	10	9.246 006



STRONG TRIO FOR YOUR LAB THE TH. GEYER BRANDS

As a specialized laboratory retailer, we offer you an almost limitless selection of products. You already know that you have access to the best manufacturers and brands from a single source.

But we have even more to offer: **Our Th. Geyer brand trio BIOSOLUTE®, CHEMSOLUTE® and LABSOLUTE®** offers you attractive alternatives when it comes to life science products, laboratory chemicals and consumables.

In this issue you will find a selection of more than 5,000 products at top promotional prices.



BIOSOLUTE® articles specially tailored to your requirements in the life science laboratory.



First-class laboratory chemicals, reagents and solutions – CHEMSOLUTE® has the perfect solution for your laboratory.



With consumables from LABSOLUTE® you are on the safe side.

HEATING THERMOSTATS SERIES UNIVERSA PRO



- Up to 200 °C
- Pump with six adjustable power levels
- Stainless steel bath with drain tap

Type	Capacity of the bath litres	PK	Cat. No.
U 4 P	3 ... 5	1	4.713 298
U 4 P *	3 ... 5	1	4.713 297
U 8 P	5.8 ... 8.5	1	4.713 318
U 8 P *	5.8 ... 8.5	1	4.713 317

* Integrated WLAN enables easy connection to PC, tablet, and smartphone.



U 8 P

LAUDA

NEW

RECIRCULATING COOLER VALEGRO Julabo



Type	Flow rate l / min.	Cooling capacity kW at 20 °C	PK	Cat. No.
VALEGRO 350	16	0.35	1	6.522 810
VALEGRO 500	19	0.5	1	6.522 811
VALEGRO 801	23	0.8	1	4.715 202
VALEGRO 1001	23	1	1	4.715 203

IMMERSION CIRCULATORS ICC LITE SERIES



IKA®

Type	Plug type	PK	Cat. No.
ICC lite 150	EU	1	4.699 375
ICC lite 150	UK	1	4.699 409
ICC lite 150	CH	1	4.699 429

LABEL PRINTER DYMO® LABELWRITER™ 550

DYMO®

- ! - Compact label printer
- Direct thermal printing technology
- Customized label design possible



Compact label printer with direct thermal printing technology for fast and efficient label printing without additional ink cartridges or toner cartridges.

- Print resolution of up to 300 x 300 dpi
- Customised label design with DYMO® Connect for Desktop software
- Printing precise label quantities without cumbersome label sheets
- Automatic energy saving mode
- PC connection via USB interface

Scope of supply: Label printer, 1 x label starter roll (28 x 89 mm), power adapter, power cable, USB cable, quick start guide

Specifications

Max. label width:	59 mm
Print speed:	62 labels/min.
Dimensions (WxDxH):	127 x 187 x 136 mm
Weight:	640 g
Power supply:	100 ... 240 V, 50/60 Hz, 24 V

Type	PK	Cat. No.
DYMO® LabelWriter™ 550	1	4.687 585

DISPENSER BOX

KEK
LABORATION BREITENBURG



- Material stainless steel (1.4301/AISI 304)
- Functional surfaces in KEK finish
- To dispense of disposable items (hoods, gloves, etc.)
- 1 - 4 boxes
- Hinged lid with bow handle for filling
- Viewing slots on the front to monitor the filling level
- Embossed removal opening
- Removable drip tray arranged under the removal opening
- 2 mounting holes on the back for wall mounting

Type	No. of compartments	Dimensions (W x D x H) mm	PK	Cat. No.
SPB-1-CLN	1	150 x 200 x 600	1	6.494 914
SPB-2-CLN	2	300 x 200 x 600	1	6.328 420
SPB-3-CLN	3	450 x 200 x 600	1	6.494 915
SPB-4-CLN	4	600 x 200 x 600	1	6.494 913

LABELLING TAPES, RAINBOW MIX, 12 M

LABSOLUTE®



- Core diameter 25 mm
- Easy to label
- Temperature resistant from -23 to 121°C

Width mm	PK	Cat. No.
12.7	24	7.695 407
19.1	16	7.695 415
25.4	12	7.695 423

MOLECULAR MODEL SYSTEM MOLYMOD®



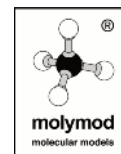
9.883 103



6.280 325



- All sets are compatible with each other
- Made of solid plastic
- 1 to 6 holes in the standard orientations



Type	Description	PK	Cat. No.
Introductory Set	48 atoms, 62 links	1	9.883 101
Organic Set, large	111 atoms, 140 links	1	9.883 103
Biochemistry Set, large	257 atoms, 160 links	1	9.883 107
Organic Set, small	50 atoms, 64 links	1	9.883 108
Inorganic/Organic Set, small	51 atoms, 38 links	1	9.883 109
Inorganic/Organic Set, large	106 atoms, 86 links	1	9.883 104
Biochemistry Set, small	72 atoms, 40 links	1	9.883 110
Organic Set, Stereochemistry, large	168 atoms, 192 links	1	7.981 659
Organic Set, Stereochemistry, small	70 atoms, 92 links	1	4.658 680
Benzene, ethane, ethene, ethyne	12 C-atoms/18 H-atoms, 9 π-bonds, 18 σ-bonds	1	9.883 111
Atomic Orbital collection set	14 models	1	6.280 325
Shapes of Molecules	8 models	1	6.280 326
Advanced level chemistry set	64 atoms, 38 links	1	6.266 240

SCHUETT COUNT COLONY COUNTER

schuettbiotec.de



Designed for reliable and efficient counting of bacterial colonies and bacteriophage plaques growing on nutrient agar or nutrient discs/filter disks in Petri dishes. Provides ergonomic and relaxed working.

- For Petri dishes with Ø 90 mm (Ø 60 or 150 mm optional)
- Individually adjustable lighting, pressure sensitivity of the counter plate and volume
- LED lighting technology, absolutely glare free and gentle on the eyes

Scope of supply: For 90 mm dia. Petri dishes: adapter (transparent) for illumination from below, adapter (black/white) for illumination from side, contrast disc (black), USB-cable, marker-pen with holder.

Type	PK	Cat. No.
schuett count Colony counter, 100-240 V	1	9.521.940

ACCESSORIES FOR SCHUETT COUNT COLONY COUNTER

Type	PK	Cat. No.
Magnifier 3 x (100 mm dia.)	1	9.521.941
Magnifier 6-8 x (60 mm dia.)	1	9.521.942
LED overhead lamp	1	9.521.943
Adapter for Petri dishes, 50 to 60 mm dia.	1	9.521.944
Adapter for Petri dishes, 140 to 150 mm dia.	1	9.521.945

INCUBATOR SHAKER INC 125 F DIGITAL SP 25

IKA®



INC 125 FS digital is the first incubating shaker with a patented removable shaking platform. When the shaking platform is removed, the device can be used as a normal incubator.

- Stops shaking automatically when door is opened
- Shaking and tempering function can run independently
- Availability of counter, timer and timer auto modes
- Accommodates up to 6 wire grid trays (without shaker platform)
- Decontamination mode available

Specifications

Temperature range:	RT +8 - 80 °C
Interior volume:	125 l
Permitted relative humidity:	80%
Speed range:	10 ... 300 rpm
External dimensions (WxDxH):	700 x 635 x 720 mm
Internal dimensions (WxDxH):	550 x 415 x 550 mm
Permitted shaking weight (incl. attachment):	7.5 kg
Rated capacity:	850 W
Power supply:	220 - 240 V, 50/60 Hz
IP code:	IP 20

Type	Plug type	PK	Cat. No.
INC 125 F digital SP 25	EU	1	4.687.496
INC 125 F digital SP 25	UK	1	6.328.686
INC 125 F digital SP 25	CH	1	6.328.687

COMPONENTS FOR MICROBIOLOGICAL MEDIA

BIOSOLUTE®



Description	Package size	PK	Cat. No.
Yeast Extract	500 g	1	1185.5833
Yeast Extract	2 kg	1	1199.2081
Peptone from Casein (pancreatic digest)	500 g	1	1185.5842
Peptone from Casein (pancreatic digested Casein)	2 kg	1	1199.2083
Tryptone from Casein (trypsin-digested Casein)	500 g	1	1185.5834
Tryptone from Casein (trypsin-digested Casein)	2 kg	1	1199.2085
Agar bacteriological, European type	500 g	1	1185.5821
Agar bacteriological, European type	2 kg	1	1199.2082

Microbiological media components and culture media from BIOSOLUTE® are high-quality dehydrated basic culture media for general microbiological and molecular biological applications as well as for the cultivation of bacteria and yeasts in fermentation or diagnostics. BIOSOLUTE® dehydrated media components are manufactured from particularly high-quality raw materials and therefore have a consistently high batch quality.

All dry microbiological media components and culture media from BIOSOLUTE® are also available in 2 kg, 5 kg and 10 kg pack sizes. Contact us or mail us at sales@thgeyer.de.

GEL ELECTROPHORESIS TANK MULTISUB MINI 10



Cleaver
SCIENTIFIC

The MultiSUB mini is the smallest device in the series, designed for small and medium sample volumes. The low buffer volume of 225 ml increases the effectiveness of the analysis.

Scope of delivery: Chamber with platinum electrodes, UV carrier 7 x 10 cm, 2 combs (8 teeth).

Specifications

Gel dimensions (W x L):	7 x 10 cm
Unit dimensions (W x L x H):	21 x 9 x 9 cm
Max. sample capacity:	7 x 10 cm tray, 64 samples
Buffer volume:	225 ml

Description	PK	Cat. No.
MultiSUB Mini 10	1	9.584.650

AGAROSE FOR ELECTROPHORESIS



BIOSOLUTE

Our high quality BIOSOLUTE® Agarose products are ideally suited for analytical and preparative routine methods in electrophoresis, such as separation of DNA and RNA fragments as well as PCR products, but also for protein electrophoresis, screening and blotting techniques.

Agarose Standard

- Electroendosmosis (EEO) 0.14-0.16
- Efficient separation of nucleic acid fragments from 250 bp to 23 kbp
- Excellent solubility and fast gelling
- High transparency and low background for clear and defined bands

Agarose low electroendosmosis

- Low EEO (0.05-0.13) ensures high electrophoretic mobility
- Extraordinary mechanical resistance and high thermal stability
- Excellent transparency and low absorbance of staining reagents give high gel clarity

Description	Capacity	PK	Cat. No.
Agarose Standard, for routine applications in electrophoresis	500 g	1	9920.0500
Agarose low electroendosmosis (EEO)	500	1	9953.0500

FILTRATION UNITS SARTOCLEAR DYNAMICS® LAB V, KITS



SARTORIUS

With the Sartoclear Dynamics® Lab V Kits, cell culture broths can be clarified and sterile filtered simultaneously. This simplifies the process of cell harvesting from mammalian cell cultures by eliminating the need for centrifugation after clarification. The PES membrane filter ensures fast filtration rates and low protein binding. Diatomaceous earth serves as a filtration aid. Pore size 0.22 µm.

Kits consist of filtration units Sartolab® RF and diatomaceous earth pouches.

Description	Nominal capacity ml	PK	Cat. No.
Lab V50 Set, 1 g diatomaceous earth	50	24	4.685.397
Lab V50 Set, 2 g diatomaceous earth	50	24	4.685.398
Lab V150 Set, 2 g diatomaceous earth	150	12	4.684.174
Lab V150 Set, 5 g diatomaceous earth	150	24	4.684.175
Lab V250 Set, 5 g diatomaceous earth	250	24	4.684.176
Lab V250 Set, 10 g diatomaceous earth	250	24	4.684.177
Lab V500 Set, 5 g diatomaceous earth	500	24	4.684.178
Lab V500 Set, 10 g diatomaceous earth	500	24	4.684.179
Lab V500 Set, 20 g diatomaceous earth	500	12	4.684.180
Lab V1000 Set, 10 g diatomaceous earth	1000	24	4.684.181
Lab V1000 Set, 20 g diatomaceous earth	1000	12	4.684.182
Lab V1000 Set, 40 g diatomaceous earth	1000	12	4.684.183

SARTOLAB® MULTISTATION BOOTH

SARTORIUS



The specially designed stand allows simultaneous filtration of up to 6 vacuum filtration units. The stand is permanently connected to a vacuum source. The filtration unit is connected to the device with a single click; a second click automatically applies the vacuum. The rotatable, multidirectional head facilitates sample handling, and numbered brackets prevent confusion.

Type	PK	Cat. No.
Sartolab® MultiStation	1	4.685.399
Vacuum hose, silicone	1	4.685.400

PIPETTE CONTROLLER ACCU-JET® S



- Precise volume adjustment
- Integrated parking position for parking



For precise pipetting of large and small volumes. The adjustable motor speed allows for switching between free flow and rapid blow-out of the liquid.

- One-hand operation
- For glass and plastic pipettes from 0.1 to 200 ml
- Precise volume setting
- Integrated rest position

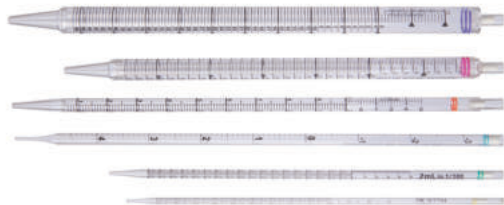


Scope of supply:

Pipette controller accu-jet® S, nickel-metal hydride battery, universal adapter (100 - 240 V, 50/60 Hz), with adapters for UK/EU/AUS/US, wall support, 2 sterile spare membrane filters (0.2 µm)

Colour	Description	PK	Cat. No.
anthracite	with universal AC adapter	1	4.682 331
berry	with universal AC adapter	1	4.682 332
petrol	with universal AC adapter	1	4.682 333
amethyst	with universal AC adapter	1	4.682 334
anthracite	without universal AC adapter	1	9.281 073
berry	without universal AC adapter	1	9.281 070
petrol	without universal AC adapter	1	9.281 071
amethyst	without universal AC adapter	1	9.281 072

SEROLOGICAL PIPETTES, STERILE, PS



The standard serological pipettes from LABSOLUTE® are individually packaged in an easy-to-open paper/plastic blister.

Capacity ml	Grad. ml	Colour	Negative grad. ml	PK	Cat. No.
1	1/100	Yellow	0.3	500	7.695 550
2	1/100	Green	0.5	500	7.695 551
5	1/10	Blue	3	200	7.695 552
10	1/10	Orange	3	200	7.695 553
25	2/10	Red	8	150	7.695 554
50	5/10	Purple	10	100	7.695 555

MICROPLATE, CELLGRADE™, STERILE

For standard cell culture applications. Standard plate for cultivating adherent cell cultures. PS surface with various accessible chemical groups, such as carboxyl and hydroxyl groups.

Description	Bottom shape/ Well volume µl	PK	Cat. No.
96-well, transparent	U / 330	50	4.000 329
96-well, white	F / 350	50	4.000 333
96-well, white / transparent	F / 330	50	4.000 335
96-well, black / transparent	F / 330	50	4.000 336

FLUID ASPIRATION SYSTEMS BIOCHEM-VACUUCENTER BVC CONTROL/PROFESSIONAL



- With glass or PP bottle
- Easy to use
- Touch panel

VACUUBRAND®



BVC control G



BVC professional

- With a powerful, chemical-resistant diaphragm pump.
- The BVC professional also has a contactless level sensor and self-closing quick couplings (4-litre PP bottle).
- Available with a vacuum-resistant, autoclavable 4-litre PP bottle or with a 2-litre borosilicate glass bottle (all types with a G' in the description) and prepared for the connection of a second suction handle.

Type	Dimensions (W x D x H) mm	PK	Cat. No.
BVC control	194 x 408 x 500	1	9.882 227
BVC control G	194 x 408 x 430	1	9.882 228
BVC professional	194 x 408 x 500	1	9.882 229
BVC professional G	194 x 408 x 430	1	9.882 230

CELL CULTURE INSERTS FOR 6-WELL AND 12-WELL PLATES



- Wide range of applications
- Free of pyrogens, DNA, DNase/RNase
- Non-cytotoxic



For	Membrane	Pore size µm	Package contents	PK	Cat. No.
6-well-plates	PC	0.4	24 x 1 pieces	24	4.666 325
12-well-plates	PC	0.4	48 x 1 pieces	48	4.666 317

MICROPLATE, CELLGRADE™, STERILE



DIGITAL BURETTES, VITLAB® CONTINUOUS, GL 45



- Pulse-free dosing
- Recirculation valve

VITLAB
Competence in Labware



The continuous burette can be used for titration media up to a maximum concentration of 1 mol/l. The patented double piston pump provides the measuring solution continuously and without pulsation. Filling processes are not necessary. All operating elements and the digital display are ergonomic, functional and clearly arranged.

- Pulse-free dispensing technique for continuous and quick titration
- Patented recirculation valve avoids reagent waste
- Clear and precise display of titrated volume
- Battery-operated, easily replaceable micro-batteries (1.5 V)
- Dispensing volume by hand wheel revolution:
2.5 ml (Continuous E), 5.0 ml (Continuous RS)
- The device can be rotated on the bottle 360°
- Telescopic discharge tube extendable from 140 to 220 mm
- Telescopic filling tube extendable from 200 to 350 mm
- Adapters for drying tubes and filters
- Certificate of conformity according to DIN 12600
- Accuracy and Coefficient of variation according to DIN EN ISO 8655-3

Supplied with:

Burette continuous, 3 PP adapters (GL 32, GL 38, S 40), 1 telescopic suction tube, 1 telescopic discharge tube, 2 micro batteries 1.5 V (LR 03/AAA), manual, quality certificate.

Type	Capacity	Accuracy max. vol. (± R%)	Precision max. vol. (≤ CV%)	PK	Cat. No.
E	2.5 ml	0.2	0.1	1	9.284 020
RS	5.0 ml	0.2	0.1	1	9.284 021

PIPETTE RINSER SYSTEM

Kartell



For easy and gentle cleaning of pipettes according to the suction lifter principle. A complete rinsing system consists of pipette washer, pipette soaking jar and pipette basket, please order separately. Heat resistant up to 105 °C, good chemical resistance.

Pipette basket: For holding pipettes up to 600 mm or burettes acc. to Mohr. The basket is equipped with a handle and a height-adjustable ring. The bottom of elastic PE reduces the risk of damage to the pipettes.

Pipette soaking jar: For pre-cleaning of the pipettes

Pipette rinser: For rinsing the pre-cleaned pipettes. The emptying siphon permits constant water exchange. The water inlet should be approx. 2 l/min.

Type	Diam. mm	Height mm	PK	Cat. No.
Pipette baskets	145	495 *	1	9.273 980
Pipette baskets	145	645 *	1	9.273 985
Pipette baskets	145	870 *	1	9.273 990
Pipette soaking jar	165	503	1	9.273 920
Pipette soaking jar	165	650	1	9.273 925
Pipette rinser	170	734	1	9.409 238
Pipette rinser	173	980	1	9.409 239

* with handle

PIPETTE STERILISING BOXES, SQUARE

**LABORBEDARF
BOCHEM
LAB SUPPLY**



Square section. Stackable. 18/10 stainless steel. With silicone pad in base and lid. Box W x D: 70 x 70 mm. Sterilisable up to 205 °C.

Diam. mm	Length mm	Effective length mm	PK	Cat. No.
70 x 70	210	202	1	9.010 781
70 x 70	290	282	1	9.010 782
70 x 70	340	332	1	9.010 783
70 x 70	435	427	1	9.010 784
70 x 70	490	482	1	9.010 785



**SINGLE-CHANNEL
MICROLITER PIPETTES
FINNPIPETTE™ F1 GLP KIT**



Thermo Scientific FinnpiPETTE™ F1 GLP Kits include the FinnpiPETTE F1 and everything you need for first-class pipetting. All FinnpiPETTE™ F1 GLP Kits are complete pipetting systems and offer all the advantages of an F1 pipette, including an adjustable finger rest for maximum comfort, secure volume adjustment and an antimicrobial surface.

- FinnpiPETTE™ F1 GLP Kit 1:** incl. 1-10/10-100/100-1000 µl pipettes, 1x pipette stand, 3 racks with Finntip Flex tips
- FinnpiPETTE™ F1 GLP Kit 2:** incl. 0.2-2/2-20/20-200/100-1000 µl pipettes, 1x pipette stand, 4 racks with Finntip Flex tips
- FinnpiPETTE™ F1 GLP Kit 3:** incl. 10-100 µl/100-1000 µl/1-10 ml pipettes, 1x pipette stand, 2 racks with Finntip Flex tips and 1 rack with Finntip tips
- FinnpiPETTE™ F1 GLP Kit 4:** incl. 2-20/20-200/100-1000 µl pipettes, 1x pipette stand, 3 racks with Finntip Flex tips

Description	PK	Cat. No.
F1 GLP Kit 1	1	4.658 824
F1 GLP Kit 2	1	4.658 825
F1 GLP Kit 3	1	4.658 826
F1 GLP Kit 4	1	4.658 827

**SINGLE CHANNEL
MICROLITER PIPETTES
FINNPIPETTE™ F2 GLP KIT**



- Light and ultra comfortable pipetting
- Improved accuracy and precision
- Fully autoclavable
- 5 year warranty with web registration

- FinnpiPETTE™ F2 GLP Kit 1:** incl. 1-10/10-100/100-1000 µl pipettes, 1 F-Series stand, 3 racks of Finntip Flex tips
- FinnpiPETTE™ F2 GLP Kit 2:** incl. 0.2-2/2-20/20-200/100-1000 µl pipettes, 1 F-Series stand, 4 Racks of Finntip Flex tips
- FinnpiPETTE™ F2 GLP Kit 3:** incl. 10-100µl/100-1000 µl/1-10 ml pipettes, 1 F-Series Stand, 2 Racks of Finntip Flex tips and 1 Rack of Finntip tips
- FinnpiPETTE™ F2 GLP Kit 4:** incl. 2-20/20-200/100-1000 µl pipettes, 1 F-Series Stand, 3 Racks of Finntip Flex tips

Description	PK	Cat. No.
FinnpiPETTE™ F2 GLP Kit 1	1	9.282 610
FinnpiPETTE™ F2 GLP Kit 2	1	9.282 611
FinnpiPETTE™ F2 GLP Kit 3	1	9.282 612
FinnpiPETTE™ F2 GLP Kit 4	1	9.282 613

**ELECTRONIC SINGLE CHANNEL MICROLITER PIPETTES
FINNPIPETTE™ NOVUS**

- Index finger surgery
- Intuitive Programming
- Multilingual user interface
- 2 year warranty with web registration

- FinnpiPETTE™ Novus GLP Kit 1:** incl. 10-100/100-1000 µl pipette, 2x Novus stand, 2x Finntip Flex-Rack
- FinnpiPETTE™ Novus GLP Kit 2:** incl. 100-1000/500-5000 µl pipettes, 2x Novus stand, 2x Finntip Flex-Rack
- FinnpiPETTE™ Novus GLP Kit 3:** incl. 1-10/10-100/100-1000 µl pipettes, 3x Novus stand, 3x Finntip Flex-Rack
- FinnpiPETTE™ Novus GLP Kit 4:** incl. 10-100µl/100-1000 µl/1-10 ml pipettes, 3x Novus stand, 3x Finntip

Description	PK	Cat. No.
FinnpiPETTE™ Novus GLP Kit 1	1	9.282 600
FinnpiPETTE™ Novus GLP Kit 2	1	9.282 601
FinnpiPETTE™ Novus GLP Kit 3	1	9.282 602
FinnpiPETTE™ Novus GLP Kit 4	1	9.282 603



CELL CULTURE FLASKS DURAN® TILT



The smart, reusable bottle system for cell culture media preparation. DURAN® TILT is perfectly designed for making work in biosafety cabinets and clean hoods safer and easier. The innovative features of the DURAN® TILT bottle changes everything. The TILT bottle has two positions: upright for filter sterilisation or storage, and tilted at 45° for pipetting. Manufactured from DURAN® borosilicate 3.3 glass for reusability and lower whole life costs.

Accessories please order separately.

Capacity	Height with cap	Thread	PK	Cat. No.
ml	mm			
500	151	GL 56	1	6.270 514

ACCESSORIES TO CELL CULTURE FLASKS DURAN® TILT



The DURAN® TILT Light Shield is a removable white silicone sleeve that covers 94% of the bottle surface. The sleeve blocks damage ultraviolet light, protects the glass surface from damage, and facilitates safer handling.

Description	PK	Cat. No.
Light Shield, white, silicone, with four GL 56 bottle tags	1	6.270 515
Membrane closure GL 56, PP white, for laboratory glass bottles pore size 0.2 µm	1	6.323 256

LABORATORY BOTTLE SYSTEM DURAN® YOUTILITY



- Specially shaped gripping zones on both sides of the bottle for easier and safer handling
- The slimmer YOUTILITY bottle shape allows more optimal use of limited space in autoclaves and laboratory refrigerators
- Each DURAN® YOUTILITY bottle is supplied as a complete system, with a pouring ring (cyan polypropylene) and a GL 45 cap (cyan polypropylene)

Capacity	Ext. diam.	Height	Colour	PK	Cat. No.
ml	mm	mm			
125	55	124	clear	4	9.071 679
250	66	158	clear	4	9.071 678
500	78	193	clear	4	9.071 677
1000	93	253	clear	4	9.071 676
125	55	124	amber	4	9.071 672
250	66	158	amber	4	9.071 673
500	78	193	amber	4	9.071 674
1000	93	253	amber	4	9.071 675

BEAKERS GLASS, DURAN®, LOW FORM



DIN 12331. ISO 3819. With graduation and spout. With trace code (batch identification), except 5, 10 and 25 ml. Certificate via the Internet.

Nominal capacity	Diam.	Height	PK	Cat. No.
ml	mm	mm		
5	22	30	1	9.013 007
10	26	35	1	9.013 008
25	34	50	1	9.013 014
50	42	60	1	9.013 017
100	50	70	1	9.013 024
150	60	80	1	9.013 029
250	70	95	1	9.013 036
600	90	125	1	9.013 048
1000	105	145	1	9.013 054
5000	170	270	1	9.013 073

ERLENMEYER FLASKS, WIDE-NECK, BOROSILICATE GLASS 3.3



DIN EN ISO 24450. Permanent volume scale. Beaded rim.

Capacity	External flask Ø	Neck Ø	Height	PK	Cat. No.
ml	mm	mm	mm		
25	42	32	70	10	7.690 036
50	51	34	85	10	7.690 037
100	64	34	105	10	7.690 038
200	79	50	131	10	7.690 039
250	85	50	140	10	7.690 040
300	87	50	156	10	7.690 041
500	105	50	175	10	7.690 042
1000	131	50	220	10	7.690 043
2000	153	72	280	6	7.690 044

Outer neck diameter without rim

ERLENMEYER FLASKS, NARROW-NECK, BOROSILICATE GLASS 3.3



ISO 1773. Permanent volume scale. Beaded rim.

Capacity	External flask Ø	Neck Ø	Height	PK	Cat. No.
ml	mm	mm	mm		
25	42	22	75	10	7.690 025
50	51	22	90	10	7.690 026
100	64	22	105	10	7.690 027
200	79	34	135	10	7.690 028
250	85	34	145	10	7.690 029
300	87	34	160	10	7.690 030
500	105	34	180	10	7.690 031
1000	131	42	220	10	7.690 032
2000	166	50	280	6	7.690 033
3000	187	50	310	6	7.690 034
5000	220	50	365	2	7.690 035

Outer neck diameter without rim

SEPARATING FUNNELS ACC. TO SQUIBB, GRADUATED, BOROSILICATE GLASS 3.3



Acc. to Squibb. Borosilicate glass 3.3. Comply with DIN ISO 4800. Including PTFE stopcock and PE stopper. Graduation in white enamel colour.

Capacity	Socket	Bore	PK	Cat. No.
ml	NS	mm		
50	19/26	2.5	1	7.690 230
100	19/26	2.5	1	7.690 231
250	29/32	2.5	1	7.690 232
500	29/32	2.5	1	7.690 233
1000	29/32	4.0	1	7.690 234
2000	29/32	4.0	1	7.690 235

ROUND BOTTOM FLASKS, WITH STANDARD GROUND JOINT, BOROSILICATE GLASS 3.3



DIN EN ISO 4797. Borosilicate glass 3.3. Durable volume scale. Ideal for consistent heating of liquids.

Capacity	Socket	Flask Ø	Height	PK	Cat. No.
ml	NS	mm	mm		
10	14/23	33	70	1	7.690 100
25	14/23	41	85	1	7.690 101
50	14/23	51	90	1	7.690 102
50	29/32	51	90	1	7.690 103
100	14/23	64	105	1	7.690 104
100	29/32	64	105	1	7.690 105
250	29/32	85	140	1	7.690 106
500	29/32	105	163	1	7.690 107
1000	29/32	131	200	1	7.690 108
2000	29/32	165	240	1	7.690 109

HAND PROTECTOR GRIP HEATGUARD



Red silicone rubber. Temperature resistant from -50 to +250 °C. Nobs on HeatGuard's surface make sure that there is a safe, slip resistant grip all the time. You can store the hand protector grip by using one of the two eyelets.

Description	PK	Cat. No.
Hand protector grip HeatGuard	1	7.696 925

ACID CAP BOTTLES, DURAN®



- Conical shoulders
- With NS pennyhead stopper and interchangeable glass cap
- Glass type I/neutral glass as per USP, EP and JP
- Autoclavable

Capacity	Diam.	Height	NS	PK	Cat. No.
ml	mm	mm			
1000	109	260	29/32	1	9.072 424

RACKS FOR CENTRIFUGE TUBES, PA



Can be combined with the centrifuge tubes on page 27!



The LABSOLUTE® racks for 15 ml (Ø 17 mm) and 50 ml (Ø 30 mm) centrifuge tubes are made of reinforced nylon and moulded in one piece.

- Flat labelling area
- Suitable for use in water bath
- Available in two sizes
- Autoclavable

FOR 15 ML TUBES

Array	Colour	Width	Height	Depth	PK	Cat. No.
		mm	mm	mm		
6 x 6	White	126	58	126	1	7.696 320
6 x 6	Blue	126	58	126	1	7.696 321
6 x 6	Red	126	58	126	1	7.696 322
6 x 6	Green	126	58	126	1	7.696 323
6 x 6	Yellow	126	58	126	1	7.696 324
6 x 12	White	248	70	127	1	7.696 310
6 x 12	Blue	248	70	127	1	7.696 311
6 x 12	Red	248	70	127	1	7.696 312
6 x 12	Green	248	70	127	1	7.696 313
6 x 12	Yellow	248	70	127	1	7.696 314

FOR 50 ML TUBES

Array	Colour	Width	Height	Depth	PK	Cat. No.
		mm	mm	mm		
3 x 3	White	109	84	109	1	7.696 325
3 x 3	Blue	109	84	109	1	7.696 326
3 x 3	Red	109	84	109	1	7.696 327
3 x 3	Green	109	84	109	1	7.696 328
3 x 3	Yellow	109	84	109	1	7.696 329
3 x 8	White	283	83	108	1	7.696 315
3 x 8	Blue	283	83	108	1	7.696 316
3 x 8	Red	283	83	108	1	7.696 317
3 x 8	Green	283	83	108	1	7.696 318
3 x 8	Yellow	283	83	108	1	7.696 319

TRAYS, STAINLESS STEEL



- Stainless steel V2A
- Smooth surface
- Easy to clean

External dimensions (W x D x H) mm	PK	Cat. No.
280 x 180 x 20	1	4.684 534
310 x 215 x 16	1	6.494 996
330 x 230 x 20	1	4.684 535
460 x 300 x 20	1	4.684 536
520 x 395 x 20	1	4.684 537

OIL AND CHEMICAL ABSORBENT CHEMSOLUTE® SORB



Fine polymer/mineral-based granules

- Do not create dust, suitable for all liquids
- Do not trigger hazardous reactions with chemicals
- Absorb up to 75 times their own weight
- Low and problem-free dosage
- Binder saturation recognizable by changes in colour
- Dam formation function
- Indicator function - colour change: acids (yellow)/alkalis (red)
- State-certified in accordance with Oil Binder Guidelines type III R approved for traffic areas, MPA NRW 22 000 8388 10

Package	Content	PK	Cat. No.
Dosing container	1,000 ml	1	2410.0001
Wide-mouth container	4,000 ml	1	2440.0001
Storage bucket	5 kg	1	2450.0001
Barrel (60 l)	20 kg	1	2460.0001

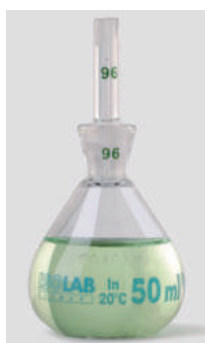
PYCNUMETERS



According to ISO 2811,
DIN 53 217,
ASTM D1475.

Capacity ml	Material	PK	Cat. No.
100	Stainless steel	1	6.223 204
50	Stainless steel	1	6.205 559

PYCNUMETERS, CALIBRATED, BOROSILICATE GLASS 3.3



ISO 3507. Individually calibrated to contain (In) to 0.001 ml. Net volume capacity is engraved on the body. Each bottle is calibrated together with its stopper. In order to differentiate easily, both the body and the stopper have the same code numbers printed on them.

Capacity ml	PK	Cat. No.
5	1	4.008 327
10	1	6.241 602
25	1	4.008 328
50	1	6.241 603
100	1	4.008 329

VIEWDEPTH DISK



The viewdepth disk is made of robust plastic for quick and easy determination of the depth of visibility. Easy lowering due to 23 holes and an attached weight. Incl. ring for attaching the cord. Dimensions: 200 x 200 mm

Marked cord for the viewdepth disk, 5 m: First meter with marks at every 5 cm, after that markings at every 20 cm

Please order the disk and the cord separately.

Description	PK	Cat. No.
Viewdepth disk, white	1	6.292 110
Marked cord, 5 m	1	6.292 112

DENSITY METERS DMA 35



- Portable
- 10 programmable parameters



Portable, digital measuring device for the determination of density, relative density and concentration. DMA 35 EX and DMA 35 EX Petrol are certified according to ATEX for applications in hazardous environments.

- On-site measurements for fast reactions
- Sample filling via manual filling pump or syringe
- Viscosity correction for measurements also on highly viscous samples
- Measuring of density, relative density, alcohol concentration, sugar/extraction concentration, API functions, H₂SO₄ concentration, ten programmable custom-specific measuring units
- Robust case with exchangeable cell
- 3-year warranty

Scope of supply: Density meter, filling tube, adapter for syringe filling, syringes, transportation case, rubber protection for measuring cell, 3 x batteries, allen key, instructions.

Specification

Density range:	0 ... 3 g/cm ³
Resolution:	0.0001 g/cm ³
Accuracy:	±0.001 g/cm ³
Sample temperature range:	0 ... 100 °C
Temperature measurement range:	0 ... 40 °C
Sample volume:	2 ml
Data memory:	1024 measurement results, 250 sample IDs, 30 measuring methods
Display:	Coloured LCD, self-rotating
Interfaces:	Bluetooth®, RFID
Dimensions (W x D x H):	103 x 245 x 126 mm
Weight:	660 g
Power supply:	3 x AA batteries, 1.5 V
IP code:	IP 54

Type	PK	Cat. No.
DMA 35 Basic	1	6.316 041
DMA 35 Standard	1	6.313 803
DMA 35 EX	1	6.313 804
DMA 35 EX Petrol	1	6.313 805

HPLC STARTER KIT, GREENLINE, GL45, FOR PFAS ANALYSIS



NEW



- Core made of PEEK
- PFAS-free

For the safe withdrawal of solvents. Screw caps, with movable insert, with fittings for capillaries and an air valve, with change indicator. For PFAS analysis of polyfluorinated chemicals according to DIN 38407-42/ DIN 38414-14.

- Complete set for up to 4 storage bottles
- Suitable for all current HPLC systems

Type	PK	Cat. No.
HPLC Starter Kit I	1	4.715 021
HPLC Starter Kit II	1	4.715 022
HPLC Starter Kit III	1	4.715 023

EXHAUST FILTER, GL 14, PP

b.safe



Lid with integrated ventilation openings and service life indicator. The filling of activated carbon is protected by two porous membranes made of PE.

Type	Life time	PK	Cat. No.
SMALL	3 months	2	6.313 839
MEDIUM	6 months	2	6.313 840
LARGE	12 months	2	6.313 841

SYRINGES FOR GC AUTOSAMPLER

CTC/THERMO



Syringes for CTC Analytics CombiPal and GC PAL.

- With fixed or removable needle
- Two different needle diameters (needle tip: cone)
- High reproducibility, low carry over

Capacity	Needle length	Gauge (OD)	Needle Type	PK	Cat. No.
25 (Gas light)	50	23 (0.63)	fixed	1	7.628 136

SHIMADZU

For Shimadzu AOC-14, AOC-17, AOC-20 and AOC-20i. Needle tip: cone.

Capacity	Needle Type	Gauge (OD)	Needle length	PK	Cat. No.
10.0	with	23 (0.63)	42	1	6.205 988

PERKIN-ELMER

GC syringes for all Perkin-Elmer autosamplers and Clarus.

- With fixed or removable needle
- Two different needle diameters
- All needles are 70 mm long with a cone point style
- High reproducibility, low carry over.

Capacity	Needle length	Gauge (OD)	Needle Type	PK	Cat. No.
5 (Gas tight)	70	23 (0.63)	fixed	1	6.204 955

Nominal capacity	Needle Type	Gauge	Point style	PK	Cat. No.
10	firmly	26	oblique	1	6.328 125
50	firmly	23 (0.63)	conical	1	6.490 100

CAPILLARY COLUMNS



BPX5

5% Phenyl Polysilphenylene-siloxane. General purpose GC column for routine gas chromatographic analysis. Suitable replacement for: DB-5, DB-5ms, DB-5.625, DB-5ms, DB-5.625, XTI-5, Rtx-5ms, Ultra-2, HP-5, HP-5MS, HP5-TA, SPB-5, MDN-5S, CP-Sil8CB, Rxt-Sil 5MS, AT-5ms, VB-5, ZB-5, VF-5ms.

Int. diam.	Length	Film thickness	PK	Cat. No.
0.32	12	1.00	1	7.635 438
0.53	25	0.25	1	6.313 876

HT8

8% Phenyl Polycarborane-siloxane.

Int. diam.	Length	Film thickness	PK	Cat. No.
0.25	30	0.25	1	6.207 027

GC BPX90

90% Cyanopropyl Polysilphenylene-siloxane.

Int. diam.	Length	Film thickness	PK	Cat. No.
0.25	60	0.25	1	6.225 162

STANDARD SEPARATING CHAMBER

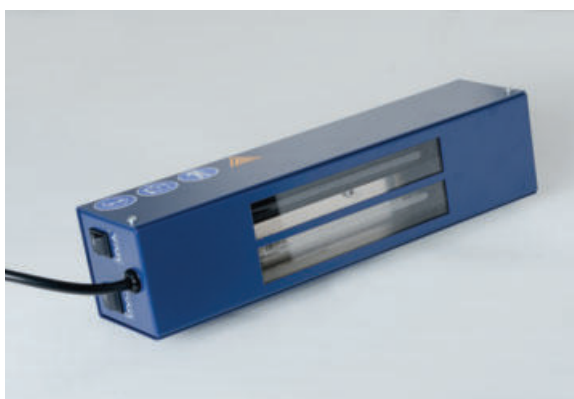


Flat chamber floor with glass ridge, for all TLC plates up to 200 mm x 200 mm. Filter paper for gas space saturation to optimise the separation results is available.

Other separating chambers available on request.

Type	PK	Cat. No.
Separating chamber 200 x 200 mm with glass lid	1	6.311 891

UV ANALYSIS LAMP



2 x 6 W Analysis lamp with two separately switchable UV tubes of high radiation intensity. The UVA tube produces long-wave radiation at 365 nm, and the UVC tube short-wave radiation at 254 nm.

Please order table stand separately.

Type	Plug type	PK	Cat. No.
UV analysis lamp	EU	1	4.690 306
UV analysis lamp	UK	1	6.325 683
Table stand	-	1	4.690 307

SIL G UNMODIFIED STANDARD SILICA LAYERS FOR TLC, GLASS PLATES / POLYGRAM®



Substrate materials for DC finished layers
 POLYGRAM®: Polyester, approx. 0.2 mm thick, max. 185° temperature stability, unbreakable, can be cut.
 ALUGRAM®: aluminium, approx. 0.15 mm thick, high temperature stability, unbreakable, can be cut.

- Silica gel 60
- Specific surface area (BET) ~500 m²/g
- Average pore size 60 Å
- Specific pore volume 0.75 ml/g
- Particle size 5 to 17 µm
- DC layer: 0.2 mm
- Indicators: manganese-activated zinc silicate with green fluorescence in short-wave UV light (254 nm)
- Available with and without fluorescence indicator (UV 254)

Type	Plate format cm	PK	Cat. No.
POLYGRAM® SIL G	4 x 8	50	4.004 825
POLYGRAM® SIL G UV ₂₅₄	4 x 8	50	9.003 493
POLYGRAM® SIL G	20 x 20	25	6.202 190
POLYGRAM® SIL G UV ₂₅₄	20 x 20	25	9.003 494
ALUGRAM® SIL G UV ₂₅₄	2.5 x 7.5	200	4.005 043
ALUGRAM® SIL G UV ₂₅₄	4 x 8	50	9.003 496
ALUGRAM® SIL G	5 x 7.5	20	4.005 042
ALUGRAM® SIL G UV ₂₅₄	5 x 7.5	20	6.227 948
ALUGRAM® SIL G	5 x 10	50	6.802 883
ALUGRAM® SIL G UV ₂₅₄	5 x 10	50	9.003 477
ALUGRAM® SIL G	5 x 20	50	7.084 918
ALUGRAM® SIL G	10 x 20	20	4.005 052
ALUGRAM® SIL G UV ₂₅₄	10 x 20	20	6.233 568
ALUGRAM® SIL G	20 x 20	25	7.059 745
ALUGRAM® SIL G UV ₂₅₄	20 x 20	25	9.003 497
ALUGRAM® Xtra SIL G UV ₂₅₄	4 x 8	50	6.259 756
ALUGRAM® Xtra SIL G UV ₂₅₄	5 x 10	50	7.638 354
ALUGRAM® Xtra SIL G UV ₂₅₄	20 x 20	25	6.242 312
ALUGRAM® Xtra SIL G	20 x 20	25	9.003 465

SPECIAL ATOMISER, WITH RUBBER BLOWBALL



With rubber blowball for nebulizing reagents. Can be connected to other compressed air supplies.

Type	PK	Cat. No.
Special atomiser	1	9.024 000

FLAKE ICE MAKER AF SERIES, WITH RESERVOIR



- Including UV lamp
- Air-cooled



Manufactured in accordance with DIN ISO 9001. For producing solid, saturated ice flakes from hygienically safe ice at a temperature of 0.5 °C. The integrated UV lamp reduces the presence of bacteria and viruses in the machine and in the water circuit.

- Housing made of stainless steel
- Special material in the interior with antimicrobial properties
- Air-cooled condenser system
- Electronic control of the ice temperature
- Filter cleaning notification
- Ergonomic access to ice through sliding door facilitates work
- Built-in reservoir allows under-counter installation

Type	Capacity kg	Dimensions (W x D x H) mm	PK	Cat. No.
AF 87 XSafe	25	535 x 620 x 890	1	6.493 145
AF 107 XSafe	30	592 x 622 x 1,078	1	6.327 265
AF 126 XSafe	40	950 x 605 x 872	1	6.328 095

CRYO TUBES, PP



Temperature resistant down to -196 °C. Do not use in the nitrogen liquid phase. Screw cap with star-shaped notch, ideal for automatic capper/decapper. Labelled with an individual barcode for each tube for quick and clear identification.

- Packed in bags of 50 pieces
- Free from DNase/RNase
- Sterile

Capacity ml	Description	Thread	Height cm	Ø mm	PK	Cat. No.
1.2	Self-standing	External	4.13	12.60	500	7.696 650
1.2	Self-standing	Internal	4.25	12.60	500	7.696 651
2.0	Self-standing	External	4.69	12.60	500	7.696 652
2.0	Self-standing	Internal	4.77	12.60	500	7.696 653

CAP INSERTS FOR CRYO VIALS



The LABSOLUTE® cap inserts are very easy to insert into the screw caps and are used to colour-code your samples.

Colour	PK	Cat. No.
Blue	100	7.696 644
White	100	7.696 645
Yellow	100	7.696 646
Purple	100	7.696 647
Red	100	7.696 648
Green	100	7.696 649

MEASURING SCOOPS, PP



White measuring scoops which are also suitable as weighing scoops. With precision formed filling edge and comfortable, stable handle. Easily readable volume quantities on the upper side of the handle. Food-safe product according to regulation (EU) No. 10/2011.

Capacity ml	Length mm	PK	Cat. No.
250	260	6	4.678 198
250	315	6	4.678 197
1000	385	6	9.201 050

DRY BLOCK HEATER SYSTEM ECODRYBLOCK



- Wide range of blocks
- Flexible with 2 heating modules
- Independent temperature and time settings



ECODryBlock is a digital, modular block thermostat for precise sample heating. The ControlPad can control up to two heating modules, each with space for two aluminium blocks. Different temperatures and times can be set for each heating module.

- Capacitive 7" touchscreen with glass surface
- User-friendly interface for quick parameter setting and intuitive operation
- Hot plate icon lights up when the temperature exceeds 50 °C
- Timer adjustable from 1 min to 99 h 59 min
- 2 timer settings selectable: Snap (timer countdown starts as soon as the analysis is started), Setpoint (timer countdown starts when the temperature setpoint is reached)
- 2 temperature control settings selectable: Fine (optimised temperature control for minimal overshoot), Fast (rapid temperature rise)
- Large selection of interchangeable aluminium blocks for different vessels
- Optional lid minimises heat loss and temperature differences
- Optional PT1000 sensor (4.688 315) enables direct measurement and control of the sample temperature

Scope of delivery: Heating module, ControlPad

Type	PK	Cat. No.
ECODRYBlock System	1	4.715 056
ECODRYBlock, without ControlPad	1	4.715 059

HOTPLATES C-MAG HP 7/ C-MAG HP 10



C-MAG HP 10

Made of glass ceramic, which is characterised by excellent chemical resistance.

- Fixed safety circuit of 550 °C
- Hot top indicator: warning when the surface is hot to protect against burns!
- Precise temperature setting via digital display (LED)
- Error code display in case of malfunction
- Raised control panel to protect against spilled liquids
- DIN socket 12878 for connecting an electronic contact thermometer, e.g., ETS-D5, for high-precision temperature control (optional)

Specifications

Heating function

Temperature display:	digital
Heat output:	
C-MAG HP 7:	1000 W
C-MAG HP 10:	1500 W
Heating rate (1 litre H ₂ O):	5 K/min
Temperature range:	50 to 500 °C
Adjustment accuracy:	±10 K
Safety circuit fixed:	550 °C

Heating plate

Dimensions:	
C-MAG HP 7:	180 x 180 mm
C-MAG HP 10:	260 x 260 mm

Type	Dimensions (W x D x H) mm	Plug type	PK	Cat. No.
C-MAG HP 7	220 x 330 x 105	EU	1	9.720 497
C-MAG HP 7	220 x 330 x 105	UK	1	4.008 098
C-MAG HP 7	220 x 330 x 105	CH	1	4.008 099
C-MAG HP 10	300 x 415 x 105	EU	1	9.720 498
C-MAG HP 10	300 x 415 x 105	UK	1	4.008 100
C-MAG HP 10	300 x 415 x 105	CH	1	4.008 101

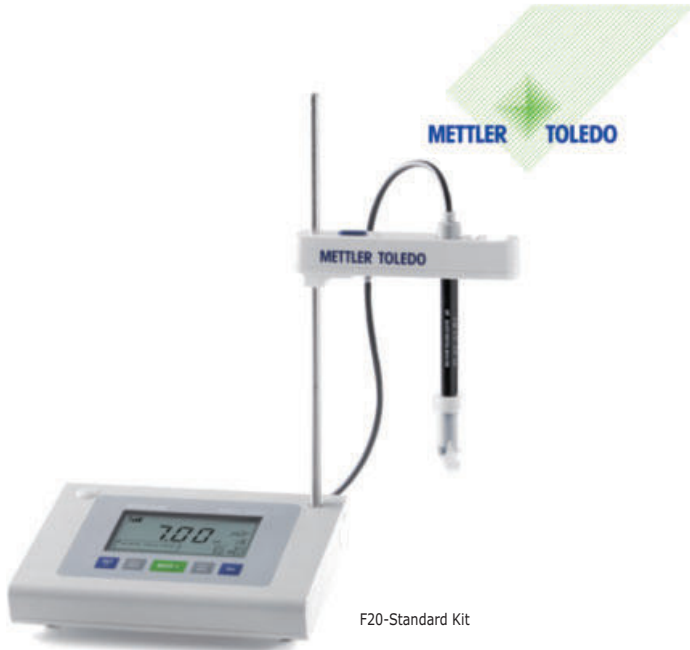
BLOCKS FOR DRY BLOCK HEATER ECODRYBLOCK



Interchangeable Aluminium blocks ensure optimal thermal conductivity, uniform heating and easy cleaning for temperature control of microcentrifuge tubes. Each block has a special borehole for mounting an external Pt1000 sensor (4.688 315).

Type	For tubes	PK	Cat. No.
MCT-W20-V015-B	Reaction vessels 1.5 ml	1	4.715 072
MCT-W20-V020-A	Eppendorf Tubes® 2.0 ml	1	4.715 073
CCT-W12-V150-A	Centrifuge tubes, 15 ml	1	4.715 075
CCT-W05-V500-A	Centrifuge tubes, 50 ml	1	4.715 076
STT-W14-COMBO	Reaction vessels 6 / 12 / 13 / 25 ml	1	4.715 077
CCT-W09-COMBO	Centrifuge tubes 1.5 / 15 / 50 ml	1	4.715 078
MCT-W21-COMBO	Centrifuge tubes 0.5 / 1.5 / 2.0 ml	1	4.715 079
VLS-W20-D120-A	Vials, Ø 12 mm	1	4.715 080
VLS-W08-D230-A	Vials, Ø 23 mm	1	4.715 086
PCR-W64-V002-A	PCR vessels	1	4.715 089
PCR-W80-V002-A	PCR strips	1	4.715 090
PCR-W96-V002-A	PCR plates	1	4.715 091

pH METER FIVEASY™ pH F20



F20-Standard Kit

- Large, easy to read and easy to understand display with all information visible at a glance
- Five self-explanatory buttons make operation simple and easy
- Electrode arm extension pole included

Scope of supply:

F20-Meter: Meter with CD operating instructions, QuickGuide, declaration of conformity, test certificate, power supply

F20-Standard: as F20-Meter, plus plastic LE438 3-in-1 pH electrode, 1 each x 4.01 pH, 7.00 pH, 9.21 pH buffer sachets

Specifications

Measuring range

pH: 0.00 ... 14.00
 mV: -2000 ... 2000 mV (± 1 mV)
 Temperature: 0 ... 100 °C (0.5 °C)
 Input: BNC, RCA (NTC 30 k Ω)
 Temperature compensation: ATC and MTC
 Power supply: 100 ... 240 V/50 ... 60 Hz/12 V DC
 Calibration: 3 points, linear, 4 predefined buffer groups

Type	PK	Cat. No.
F20 meters	1	6.280.100
F20 Standard Kit	1	6.280.101

ELECTRODE FILLING SOLUTIONS



- Ideal for topping up and replacing reference electrolyte solution in pH electrodes
- Suitable for long-term wet storage of the electrodes
- Traceable to SRM from the National Institute of Standards and Technology (NIST)

Description	Capacity ml	PK	Cat. No.
Lithium chloride solution 1 mol/l in ethanol	100	1	2230.0100
Potassium chloride solution 3 mol/l, free from silver ions	1000	1	1619.1000
Potassium chloride solution 3 mol/l, free from silver ions	5000	1	1619.5000
Potassium chloride solution 3 mol/l, saturated with AgCl	1000	1	1633.1000

pH TESTER LLG-pH PEN



Cost efficient pH tester, ideal for testing small amounts of liquid and in narrow vessels.

- ATC from 0 °C to 50 °C
- Large, easy-to-read LCD display
- **3-point calibration**
- Batteries (2 x 3 V CR2032) please order separately

Specifications

pH Measuring range: 0 ... 14
 pH Accuracy: ± 0.1
 pH resolution: ± 0.1
 IP code: IP 65
 Warranty: 2 years

Type	PK	Cat. No.
LLG-pH Pen	1	6.263.690

pH INDICATOR PAPER

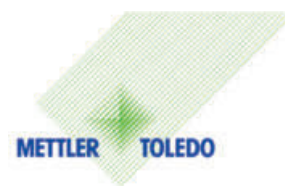


CHEMSOLUTE® Universal pH-indicator paper is a cost-effective alternative for the rapid determination of the pH value and consists of high-quality filter papers impregnated with indicator solution.

- pH value determination in 1.0 pH steps
- With colour scale
- Roll (L x W): 5 m x 7 mm

Range	Description	PK	Cat. No.
pH			
1 - 11	Box with 1 roll	1	2811.0001
1 - 11	Refill pack with 3 rolls	1	2811.0003
1 - 14	Box with 1 roll	1	2814.0001
1 - 14	Refill pack with 3 rolls	1	2814.0003

pH BUFFER SOLUTIONS



Technical, NIST/DIN and certified buffer solutions for calibrating pH electrodes.
 Tolerance: ± 0.02 pH

pH-value at 25 °C	Capacity ml	PK	Cat. No.
4.01	250	1	9.041.844
4.01	250	6	9.041.854
7.00	250	1	9.041.847
7.00	250	6	9.041.857
9.21	250	1	9.041.849
9.21	250	6	9.041.859
10.00	250	1	9.041.850
10.00	250	6	9.041.860



IDS pH ELECTRODES SENTIX® 940



Low-maintenance pH combination electrodes with plastic shaft and gel electrolyte, with built-in temperature sensor. Cable length 1.5 m, SenTix® 940-3 with 3 m cable.

Specifications

Temperature range: 0 ... 80 °C
 pH range: 0 ... 14 pH
 Length/diam.: 120 mm/12 mm

Type	PK	Cat. No.
SenTix® 940	1	6.240 824
SenTix® 940-3	1	6.239 769

IDS pH ELECTRODES SENTIX® 980



Precision pH electrodes with glass shaft and liquid electrolyte KCl 3 mol/l Ag+ free, with built-in temperature sensor NTC 30 kOhm. Cable length 1.5 m.

Specifications

Temperature range: 0 ... 100 °C
 pH range: 0 ... 14 pH
 Length/diam.: 120 mm/12 mm

Type	PK	Cat. No.
SenTix® 980	1	6.238 921

OPTICAL IDS DO SENSOR FDO® 925



Optical IDS DO sensor for portable MultiLine® IDS and InoLab® Multi IDS benchtop meters. Factory calibrated membrane with smart chip. Built-in NTC 30 kOhm temperature sensor.

Specifications

Temperature range: 0 ... 50.0 °C ±0.2 °C
 DO concentration: 0.00 ... 20.00 mg/l ±0.5% of value
 DO saturation: 0.0 ... 200.0% ±0.5% of value
 Partial pressure: 0.0 ... 400 hPa ±0.5% of value
 Shaft length/diameter: 150 mm/15.3 mm

Type	Description	PK	Cat. No.
FDO® 925	1.5 m fixed cable	1	6.238 174

MULTIPARAMETER METERS MULTILINE® 3620 IDS



The Multi 3620 IDS with two universal measuring channels works with all WTW IDS pH, ORP, dissolved oxygen sensors, conductivity measuring cells and turbidity sensors, whether connected by cable or wirelessly via a radio connection. Radio-ready, colour graphic display, 2 field-ready waterproof USB interfaces.

Multi IDS: Single device in carrying case with guide, CD-ROM and rechargeable batteries, driver software for USB, cable, plug-in power supply

Multi 3620 IDS SET C: Device in carrying case with IDS sensors (SenTix® 940 digital pH sensor, TetraCon® 925 digital conductivity measuring cell), QSC kit, buffers 4 and 7, conductivity standard, tripod, beaker, CD-ROM, rechargeable batteries, cable, plug-in power supply, SM Pro armouring

Multi 3620 IDS SET G: Device in large field case with IDS sensors (digital pH sensor SenTix® 940-3, opticaloxygen sensor FDO® 925-3, digital conductivity measuring cell TetraCon® 925-3), QSC kit, tripod, beaker, buffers 4 and 7, conductivity standard, CD-ROM, rechargeable batteries, cable, plug-in power supply, armouring SM Pro

Specifications

Data storage: manual: 500 data records
 Dimensions (W x D x H): approx. 180 x 80 x 55 mm
 Protection class: IP 67

Type	Description	PK	Cat. No.
3620	2 channels, meter only	1	6.282 919
3620 SET C	2 channels, with SenTix® 940, TetraCon® 925	1	6.270 419
3620 SET G	2 channels, with SenTix® 940, FDO® 925-3, TetraCon® 925-3	1	6.283 708

IDS CONDUCTIVITY CELL PROBES



Intelligent digital 4-pole cell with integral temperature sensor. Cable length 1.5 meters. Measuring range: 1 µS/cm to 2 S/cm.

Type	Length mm	Electrode	PK	Cat. No.
TetraCon® 925	120	Graphite	1	7.653 077

DISPOSABLE GLOVES, NITRILE SENSITIVE, POWDER-FREE

EN ISO 374-1 EN ISO 374-5 EN 420
Type B



The powder-free, lavender blue LABSOLUTE® disposable gloves Sensitive made of nitrile are flat with a rolled cuff and offer excellent elasticity and wearing comfort. A special after-treatment makes these LABSOLUTE® disposable gloves skin friendly and easy to put on. The gloves have textured finger tips.

The LABSOLUTE® nitrile gloves with an AQL value of 1.5 comply with the following standards and directives

- EN 420, EN ISO 374-1, -2, -4, -5 and EN 16523-1
- (EU) 2016/425 (PPE in accordance with CE category III for complex risks)
- 1935/2004 (can be used in direct contact with food)
- ASTM 1671 / ISO 16604 (viral penetration)

Further properties

- Approved for the use within Hazard Analysis and Critical Control Points (HACCP) concepts
- Resistance against ethidium bromide (1 %) for more than 480 min (level 6)
- Delivered in handy dispenser boxes of 200 (XS, S, M, L) or 180 pieces (XL)
- Free from phthalates, softeners and allergenic latex proteins
- Storage life: 3 years
- Length: approx. 240 mm
- Thickness (double): finger min. 0.14 mm, palm min. 0.12 mm, cuff min. 0.10 mm
- Can be worn on the left or right hand

Size	PK	Cat. No.
XS	200	7.696 904
S	200	7.696 900
M	200	7.696 901
L	200	7.696 902
XL	180	7.696 903

HAND PROTECTOR GRIP HEATGUARD



Red silicone rubber. Temperature resistant from -50 to +250 °C. Nobs on HeatGuard's surface make sure that there is a safe, slip resistant grip all the time. You can store the hand protector grip by using one of the two eyelets.

Description	PK	Cat. No.
Hand protector grip HeatGuard	1	7.696 925

CHEMICAL PROTECTION GLOVE BUTOFLEX 650

EN 388 EN ISO 374-1 EN ISO 374-5
Type A



Flexible chemical protection glove made of butyl rubber with bonded cotton inner knit and special grip profile, serrated cuff:

- Provides protection against extremely hazardous chemicals such as highly corrosive acids, esters, ketones, amine derivatives
- Gas impermeable
- High flexibility and dexterity
- Very comfortable to wear
- Very good grip
- Good ozone, UV and temperature resistance

Pack of 1 pair.

Length:	350 mm
Thickness:	1.5 mm
Colour:	black
EN:	Cat. III

Size	PK	Cat. No.
7	1	6.255 225
8	1	6.241 351
9	1	6.285 462
10	1	6.285 460
11	1	6.285 461

HOLDER FOR GLOVE BOXES, STAINLESS STEEL



Holder for hygienic and easy accessible storage of glove boxes. Also suitable for laboratory wipes (7.695 251) and disposable bags (7.696 994, 7.697 000) in dispenser boxes.

- Stainless steel, electrolytically polished
- Wall mounting material included
- Depth of the brackets: 85 mm

Description	Width mm	Height mm	Depth mm	PK	Cat. No.
For one box	210	140	90	1	7.696 920
For three boxes	245	480	100	1	7.696 921

SAFETY SPECTACLES LIGHT



Occupational safety and comfort of the highest order - and all for a weight of just 21 grams. LABSOLUTE® light combines innovative technology with ultra-modern materials to create sensationally lightweight safety spectacles.

Innovative concept for high levels of acceptance among users

- Extremely lightweight safety spectacles
- Sporty design
- Excellent comfort and secure grip thanks to a perfect fit and soft plastic on the arm ends

Description	PK	Cat. No.
Safety spectacles light	1	7.696 000

BOUFFANT CAPS, PP



The LABSOLUTE® bouffant caps with a diameter of 52 cm and an elastic strap are made of soft and breathable PP fleece with a grammage of 10 g/m² only.

Colour	PK	Cat. No.
Green	100	7.695 320
White	100	7.695 321
Blue	100	7.695 322

EAR DEFENDER UVEX K1



Soft memory foam cushions are light and extremely comfortable to wear.

- Easy length adjustment
- Padded headband for optimal comfort
- Wearer comfort is ensured through soft surface
- Designed to be lightweight with a small capsule

Sound protection (SNR): 28 dB(A)

Type	PK	Cat. No.
uvex K1	1	6.270 939

VISITOR COATS, PP



- Disposable coats, ideal for visitors
- Made from breathable PP nonwoven fabric
- Without pockets
- Individually packaged in poly bags



Size	PK	Cat. No.
Universal	50	7.695 310

FACE MASK, PROFILE PLUS



Disposable surgical face mask with Earloops, non-sterile, 3-layer non-fibre-glass filter medium.

- Three layers of protection
- Soft elastic earloops
- Integrated nosepiece
- Latex-free
- Nickel-free
- EN 14683 Type II R, CE
- Box with 50 pieces

Colour	Width mm	Length mm	PK	Cat. No.
blue	95	175	50	6.316 058
white	95	175	50	6.316 059
green	95	175	50	6.316 060
pink	95	175	50	6.316 244
black	95	175	50	6.321 449
blue	95	175	500	6.320 157
white	95	175	500	6.320 162
green	95	175	500	6.320 158
pink	95	175	500	6.322 924
black	95	175	500	6.322 923
lime	95	175	50	6.320 159
orange	95	175	50	6.320 160
violet	95	175	50	6.320 161

DISPOSAL BAGS, STANDARD, PP



Autoclavable up to 134 °C. For autoclaving, the bags must only be slightly closed.

Volume approx. l	W x H mm	Film thickness µm	max. Volume approx. l	PK	Cat. No.
1.5	200 x 300	50	3.0	100	7.697 000
6.0	300 x 500	50	11.6	500	7.697 001
22.0	400 x 780	50	33.2	500	7.697 003
32.0	600 x 800	50	69.8	100	7.697 002
72.0	700 x 1100	50	136.8	75	7.697 004
72.0	700 x 1100	50	136.8	350	7.697 005

DISPOSAL BAGS, HIGHLY TRANSPARENT, PP



Autoclavable at 121 °C. For autoclaving, the bags must only be slightly closed. Highly transparent.

Volume approx. l	W x H mm	Film thickness µm	max. Volume approx. l	PK	Cat. No.
1.5	200 x 300	50	3.0	100	7.696 994
6.0	300 x 500	50	11.6	500	7.696 995
22.0	400 x 780	50	33.2	500	7.696 996
32.0	600 x 800	50	69.8	100	7.696 997
32.0	600 x 800	50	69.8	500	7.696 998
72.0	700 x 1100	50	136.8	350	7.696 999

DISPOSAL BAG, BIOHAZARD, PP



With the autoclavable bags made of PP, you can dispose of your contaminated labware. Thanks to the strong PP film (50 µm) and an extra broad seam at the bottom, the bags are particularly tear-resistant.

Autoclavable up to 134 °C. For autoclaving, the bags must only be slightly closed.

Volume approx. l	W x H mm	Film thickness µm	max. Volume approx. l	PK	Cat. No.
72.0	700 x 1100	50	136.8	350	7.697 006

HOLDER FOR DISPOSAL BAGS



The LABSOLUTE® holder for disposables bags is made of steel wire and coated with a PE resin.

- With rubber feet
- Suitable for 200 x 300 mm disposable bags (7.696 994, 7.697 000)

Height mm	Lower ring Ø mm	Top ring Ø mm	PK	Cat. No.
250	160	125	1	7.697 010

QUICK-LOCK TIES



Red. Polyethylene, round, can be reopened. Further colours available on request.

Diam. mm	Length mm	PK	Cat. No.
3.5	120	1000	9.404 182
3.5	180	1000	9.404 184
3.9	240	1000	9.404 186
4.4	320	1000	6.235 096

DISPOSABLE CARTONS FOR BROKEN GLASS



Easy-access collection containers make it convenient to safely dispose of non-biohazardous broken glass from your lab.

- Sturdy corrugated container lined with a clear, thick plastic bag to protect against leakage
- Reclose-A/Remove-A-Lid allows you to reclose the container
- A wide-mouth opening easily accommodates disposal of large items
- Inner flap seals the lid when the container is filled
- Containers ship and store flat and easily fold together for use

Type	Norm. capacity L	PK	Cat. No.
Table	5	50	2.976 110
Floor	63	6	2.976 112

ALUMINIUM BOTTLES, WITH UN APPROVAL



The aluminium bottle is particularly suited for storing, transporting or sending substances and reference samples which have to be stored completely unaltered.

- With UN approval (60 - 5600 ml)
- Pure aluminium (AL 99.5 material)
- PP screw cap with internal aluminium seal included

Capacity ml	Diam. mm	Height mm	PK	Cat. No.
38	35	70	1	9.072 168
60	40	88	1	9.072 169
120	57	97	1	9.072 170
300	57	160	1	9.072 171
600	74	192	1	9.072 172
1200	88	248	1	9.072 173

DISPOSABLE SAMPLERS POWDERDISPO FOR SOLIDS, HDPE



Manufactured in a clean room, individually packaged. Optionally gamma-ray sterilised. For cross-sectional samples of powdery or slightly cohesive substances.

Capacity ml	Length mm	Description	PK	Cat. No.
60	300	sterile	20	6.282 453
60	300	non-sterile	20	6.282 452
100	500	sterile	20	6.259 428
100	500	non-sterile	20	9.303 736

SAMPLING LANCE MILKY, V4A, ACC. TO EN ISO 707



Universal powder and granulate collector, made of V4A stainless steel. Complies with DIN and IDF (International Dairy Federation) standards. The collector is inserted into bags or bins, and the sample is taken using the half-shell-shaped lance. Autoclavable.

Capacity ml	Length cm	Imm. depth mm	PK	Cat. No.
150	48	385	1	6.051 629

SAMPLE SPOONS, STAINLESS STEEL



Due to the specially shaped spoon, almost every corner in a container can be reached.

- Stainless steel 1.4301
- Chemical resistant (not against acids and alkalis)
- Food safe
- Autoclavable

Nominal capacity ml	Overall length mm	PK	Cat. No.
2	150	1	6.202 093
2	180	1	6.206 376
2	210	1	6.206 377
9	300	1	6.206 378
9	400	1	7.609 379
9	500	1	6.316 707

SAMPLING SCOOPS AND SPOONS, PS, STERILE

Highly impact-resistant polystyrene plastic. The spatula has a sturdy tip for taking sterile samples and piercing paper bags or similar packaging.

- Individually sealed and sterilised in a polyethylene bag
- Long handle increases the distance between the hand and the sample
- Scoop is suitable for use as weighing boat
- Food-safe
- Lot stamped for accurate lot tracing
- Shipped with a Certificate of Processing for Sterilisation
- Made from FDA-grade materials

Type	Capacity ml	PK	Cat. No.
Spatula, v-shaped	15	100	6.201 657





OSMOLALITY STANDARDS



Osmolality Standards for calibration and control, compatible with all types of osmometers. ISO 17025 certified. Values from 100 to 700 mOsmol/kg H₂O according to European Pharmacopoeia 2.2.35 and US Pharmacopoeia 785. 12 ampoules of 5 ml each.

Type	Description	PK	Cat. No.
RE-OSM-50	50 mOsmol/kg H ₂ O	12	6.286 326
RE-OSM-100	100 mOsmol/kg H ₂ O	12	6.286 324
RE-OSM-200	200 mOsmol/kg H ₂ O	12	6.286 325
RE-OSM-290	290 mOsmol/kg H ₂ O	12	6.280 786
RE-OSM-300	300 mOsmol/kg H ₂ O	12	6.284 310
RE-OSM-400	400 mOsmol/kg H ₂ O	12	7.970 554
RE-OSM-500	500 mOsmol/kg H ₂ O	12	6.270 201
RE-OSM-600	600 mOsmol/kg H ₂ O	12	6.286 327
RE-OSM-700	700 mOsmol/kg H ₂ O	12	6.286 328
RE-OSM-850	850 mOsmol/kg H ₂ O	12	6.286 334
RE-OSM-900	900 mOsmol/kg H ₂ O	12	6.286 335
RE-OSM-1000	1000 mOsmol/kg H ₂ O	12	6.286 329
RE-OSM-1500	1500 mOsmol/kg H ₂ O	12	6.286 330
RE-OSM-2000	2000 mOsmol/kg H ₂ O	12	6.286 331

ION CHROMATOGRAPHY STANDARDS



The ion chromatography standards are produced gravimetrically from high-purity material in a highly controlled clean room environment (ISO 7). The final product is tested and verified before bottling.

Description	Capacity ml	PK	Cat. No.
1 mg/ml (1000 ppm) bromide	100	1	6.204 715
1 mg/ml (1000 ppm) chloride	100	1	6.204 716
1 mg/ml (1000 ppm) fluoride	100	1	6.204 717
1 mg/ml (1000 ppm) nitrate	100	1	6.204 718
1 mg/ml (1000 ppm) phosphate	100	1	6.204 719
1 mg/ml (1000 ppm) sulfate	100	1	6.204 720
1 mg/ml (1000 ppm) nitrite	100	1	6.205 294
1 mg/ml (1000 ppm) sulphite	100	1	4.695 134
1 mg/ml (1000 ppm) chlorite	100	1	4.695 105
1 mg/ml (1000 ppm) chlorate	100	1	4.695 103
1 mg/ml (1000 ppm) calcium	100	1	6.204 721
1 mg/ml (1000 ppm) magnesium	100	1	6.204 723
1 mg/ml (1000 ppm) potassium	100	1	6.204 724
1 mg/ml (1000 ppm) sodium	100	1	6.204 725
1 mg/ml (1000 ppm) ammonium	100	1	6.205 295

CALIBRATING STANDARDS TOC



Total Organic Carbon (TOC) standards are manufactured from high-purity raw materials and are suitable for calibrating of TOC analysers to a high accuracy. These standards are independent, traceable and certified.

Concentration	Accuracy	Package	PK	Cat. No.
	(±)			
5 ppm	5%	amber glass bottle	1	6.235 803
15 ppm	5%	amber glass bottle	1	6.268 502
20 ppm	5%	amber glass bottle	1	4.012 106
25 ppm	5%	amber glass bottle	1	6.317 555
50 ppm	5%	amber glass bottle	1	6.235 238
100 ppm	1%	HDPE twin neck bottle	1	4.012 107
250 ppm	1%	HDPE twin neck bottle	1	4.012 108
500 ppm	1%	HDPE twin neck bottle	1	6.210 157
1000 ppm	0.5%	HDPE twin neck bottle	1	6.231 121
2000 ppm	0.5%	HDPE twin neck bottle	1	6.253 516
10000 ppm	1%	HDPE twin neck bottle	1	4.696 805

TURBIDITY STANDARDS



Highly accurate turbidity standards composed of suspended microspheres, suitable for Instrument calibration and control of all turbidity meters. Stable, shelf life of 2 years (from Date of Manufacturing). NIST traceable, US EPA approved and tested in compliance with ISO 7027. HDPE bottles of 100 ml.

- Non-Ratio for Non-Ratio Turbidity
Measuring instruments will measure the scattered light from the sample at a 90° angle from the incident light (one detector)

Description	Volume ml	PK	Cat. No.
Non-Ratio 0.0 NTU	100	1	6.233 961
Non-Ratio 0.02 NTU	100	1	6.322 425
Non-Ratio 0.1 NTU	100	1	6.075 473
Non-Ratio 0.2 NTU	100	1	6.075 476
Non-Ratio 1.0 NTU	100	1	6.231 930
Non-Ratio 2 NTU	100	1	6.235 607
Non-Ratio 5.0 NTU	100	1	6.231 413
Non-Ratio 10.0 NTU	100	1	6.075 474
Non-Ratio 50.0 NTU	100	1	6.233 816
Non-Ratio 90 NTU	100	1	4.695 479
Non-Ratio 100.0 NTU	100	1	6.075 475
Non-Ratio 200 NTU	100	1	4.012 096
Non-Ratio 500.0 NTU	100	1	6.233 817
Non-Ratio 800 NTU	100	1	4.012 099
Non-Ratio 1000 NTU	100	1	4.012 101
Non-Ratio 4000 NTU	100	1	4.012 103

MD50 COD PHOTOMETER



- Highest accuracy for samples with low contamination
- Save time with the One Time Zero function



The MD50 COD is specifically designed for COD determination and offers superior performance, enhanced usability and expanded testing capabilities, including the new Very Low Range (VLR) COD method for ultra-sensitive measurements.

- Highest accuracy for low-pollution samples
- Measurement of COD in high, medium and very low ranges for versatile applications
- Easy operation thanks to intuitive symbols and animations, as well as user-friendly navigation
- Handheld design for comfortable single-handed operation
- Wireless NFC and USB-C data transfer
- Automatic GLP compliance
- Versatile connectivity via the AquaLX® app or Lovibond® Data Expert software
- Pre-programmed Lovibond® CSB cuvette tests for operation right out of the box are available separately

Methods: M134, M130, M133, M131, M132

Scope of supply: Photometer in carrying case, adapter for cells (16 mm), 2 x dosing syringes (1 ml, 2 ml), USB-C cable, screwdriver, manual, 2 x AA batteries



NEW

Type	PK	Cat. No.
MD50 COD	1	6.523 619

REFERENCE STANDARD KITS CHLORIDE FOR PHOTOMETERS MD SERIES

The reference standards are used to check the photometric detection accuracy and reproducibility of measurement results. Adjustment of the photometers is not possible with the reference standard kits. When checking the photometers with the reference standard kit, the appropriate method is selected, and the measured value in mg/L is compared with the reference value of the standard kit. The shelf life is two years from the date of manufacture if used and stored properly.



Measuring range	For	PK	Cat. No.
0.2 / 1.0 mg/l *	MD100/110/200 Cl6 (tablet/liquid)	1	7.627 352
0.5 / 2.0 mg/l *	MD100/110/200 Cl6 (tablet/liquid)	1	6.252 821
1.0 / 4.0 mg/l *	MD100/110/200 Cl6 (tablet/liquid)	1	9.699 290
0.2 / 1.0 mg/l *	MD150 Tablet/M100 (Tablet)	1	6.494 326
0.2 / 1.0 mg/l **	MD100/110 Cl2 (Powder)	1	6.252 822

* For instruments with tablet/liquid reagent. ** For instruments with powder reagent.

LLG CUVETTES, GLASS



LLG cuvettes have two clear windows and two matt side walls. The walls and bottom are polished on the inside and matt on the outside. The thickness of the windows and bottom is 1.25 mm. The total height of the standard cuvettes is 45 mm. Each cuvette is supplied with a PTFE lid.

- Optical Glass: 335 to 2500 nm
- Quartz: 200 to 2700 nm



Type	Volume ml	Path length mm	PK	Cat. No.
quartz glass	3.5	10	2	4.681 513
quartz glass	17.5	50	2	4.681 514
optical glass	3.5	10	4	4.681 515
optical glass	17.5	50	4	4.681 516

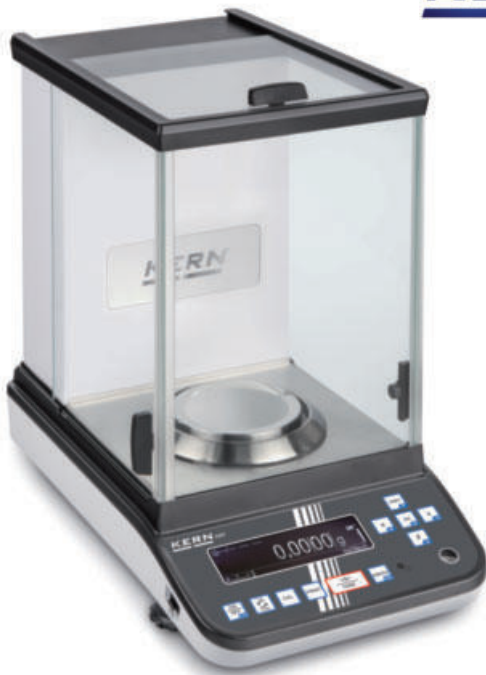
CUVETTE RACK, PP



Autoclavable cuvette rack made of robust PP with 16 positions, suitable for cuvettes with a pathlength of 10 mm and external dimensions of 12.5 x 12.5 mm.

Description	PK	Cat. No.
Cuvette rack	1	7.697 099

ANALYTICAL BALANCE (ABP)



This new generation of analytical balances combines the highest level of precision with large weighing capacities.

- OLED display
- Navigation pad for super quick navigating through the menus
- Automatic internal adjustment in the case of a change in temperature $\geq 1\text{ }^{\circ}\text{C}$ or time-controlled every 4 h, guarantees a high degree of accuracy and makes the balance independent of its location of use
- Dosage aid: High-stability mode and other filter settings can be selected
- Simple recipe weighing and documenting with a combined tare/print function
- Menu language: German, English
- USB data interfaces and RS-232
- Large glass draft shield with 3 sliding doors for easy access to the items being weighed
- Incl. protective working cover

DM models: Incl. Multi-function weighing plate for minimising the effect of currents of air in the weighing space and for easy fixing and weighing of protruding samples, such as sample paper, PCR containers or micro centrifuge tubes

Specifications

Overall dimensions, including draft shield (W x D x H):	213 x 407 x 344 mm
Weighing space (W x D x H):	166 x 156 x 220 mm
Net weight:	8 kg
Power supply:	220 ... 240 V AC, 50 Hz

Type	Weighing range	Readability	PK	Cat. No.
	g	mg		
ABP 100-5M	135	0.01	1	6.321 067
ABP 200-5M	220	0.01	1	6.321 068
ABP 100-4M	120	0.1	1	4.667 748
ABP 200-4M	220	0.1	1	4.667 749
ABP 300-4M	320	0.1	1	4.667 750
ABP 100-5DM	52 / 120	0.01 / 0.1	1	4.667 751
ABP 200-5DM	102 / 220	0.01 / 0.1	1	4.667 752

PRECISION BALANCE PCB IOT LINE



The integrated KERN Universal Port (KUP) allows the connection of external KUP interface adapters such as RS-232, USB, Bluetooth, WLAN, Analogue, and Ethernet. The KERN Communication Protocol (KCP) permits searching and remote control of the balance using external control devices or computers.

- Backlit LCD display, digit height 21 mm
- PRE-TARE function
- Recipe function
- Weighing with tolerance range
- Freely programmable weighing unit
- Anti-shock system
- AUTO-OFF function
- Battery operation possible (not included in scope of supply)

Scope of supply:

Precision balance, protective working cover

Type	Readability	max. load	PK	Cat. No.
	g	g		
PCB 300-3	0.001	360	1	6.325 454
PCB 1000-2	0.01	1200	1	4.691 682
PCB 2000-1	0.1	2000	1	4.691 683
PCB 3000-2	0.01	3600	1	6.324 972
PCB 6000-1	0.1	6000	1	4.691 684

WEIGHING BOATS, DIAMOND-SHAPED, PS



PS. Smooth surfaces. Antistatic. Biologically inert. Temperature resistant from -10°C up to 70°C . Food-grade compliant. Can be used with microwave moisture analyzers. Precise transfer of even small amounts due to the flexible design.

Colour	Volume ca.	Dimensions W x H x D	PK	Cat. No.
	ml	mm		
White	5	55 x 6 x 35	500	7.696 250
White	30	78 x 14 x 56	500	7.696 251
White	100	119 x 19 x 90	500	7.696 252
Black	5	55 x 6 x 35	500	7.696 253
Black	30	78 x 14 x 56	500	7.696 254
Black	100	119 x 19 x 90	500	7.696 255

CENTRIFUGES FRONTIER™ MULTI PRO FC5714



- Universal centrifuge
- Double imbalance measurement



Powerful and versatile Universal Centrifuges for almost every laboratory application. The intuitive design of the centrifuges and accessories enables easy access to the parameter settings and quick change between applications.

Please order rotors separately.

Specifications

Max. RCF:	18.624 xg
Max. Speed:	14.000 rpm
Max. Load:	4 x 100 ml
Power consumption:	240 W
Dimensions (W x D x H):	362 x 493 x 330 mm
Weight:	30 kg
Power supply:	230 V, 50/60 Hz



Type	PK	Cat. No.
FC5714	1	4.661.524

MICRO TUBES, PP



- Non-sterile
- Guaranteed metal-free
- Precise graduations lines on 1.5 and 2.0 ml reaction vessels
- Puncturable cap
- Matted cap with labelling field
- Can be centrifuged up to 25000 x g (1.5 and 2.0 ml) and 20000 x g (0.5 ml)
- Autoclavable at 121°C

Volume ml	PK	Cat. No.
0.5	1000	7.696.734
1.5	500	7.696.753
2.0	500	7.696.754

ACCESSORIES FOR FRONTIER™ MULTI PRO FC5714



Description	PK	Cat. No.
Angle rotor, 12 x 15 ml RB/FA, ID	1	4.661.550
Angle rotor 24 x 1.5/2.0 ml ID BIOSEALS V1	1	7.972.424
Angle rotor, 30 x 1.5/2.0 ml, ID, sealable	1	4.661.552
Angle rotor, 30 x 15 ml RB/FA, ID	1	4.661.548

ID: Auto rotor identification, RB: Round bottom tubes, FA: Conical bottom tubes

CENTRIFUGE TUBES, PP



The LABSOLUTE® tubes have very good thermal, mechanical and chemical stability and are made of high-quality PP (equivalent to US pharmacopoeia USP Class VI). Caps are made of PE.

- Centrifugation stability of 15 ml tubes: up to 17,000 x g
- Centrifugation stability of 50 ml conical tubes: at least up to 18,000 x g

- Centrifugation stability of 50 ml skirted tubes: up to 7,000 x g
- Free from DNase and RNase, PFAS-free
- Endotoxin level: <0.5 EU/ml
- Sterile goods are gamma-sterilized (SAL 10-6)
- Available in bags (25 pcs/bag) or racks (25 pcs/rack)

Description	Capacity ml	Sterile	Ø mm	Height mm	PK	Cat. No.
Conical, in bags	15	No	16	120	500	7.696.712
Conical, separate tubes and caps	15	No	16	120	500	7.696.713
Conical, in bags	15	Yes	16	120	500	7.696.714
Conical, in racks	15	Yes	16	120	500	7.696.715
Conical, in bags	50	No	28	115	500	7.696.717
Conical, separate tubes and caps	50	No	28	115	500	7.696.718
Conical, in bags	50	Yes	28	115	500	7.696.719
Conical, in racks	50	Yes	28	115	300	7.696.720
Self standing, in bags	50	No	28	115	500	7.696.722
Self standing, separate tubes and caps	50	No	28	115	500	7.696.723
Self standing, in bags	50	Yes	28	115	500	7.696.724
Self standing, in bags, red lid	50	Yes	28	115	500	7.696.725

MULTI-POSITION MAGNETIC STIRRER WITH HEATING AM 4 DIGITAL SERIES



AM 4 Digital SET

Magnetic stirrer with four individually controllable stirring positions. A timer can be set from 1 minute to 99 hours 59 minutes at each stirring position. An external temperature probe can be connected for precise thermoregulation of the sample. Suitable for stirring volumes of up to 20 litres per stirring position. Stirring positions made of ceramic-coated aluminium alloy CerAlTop™ ensure high temperature homogeneity, and are resistant to chemicals and scratches. The hot indicator signals when the plate temperature is above 50 °C, even if the heating function is not active. Other safety functions, such as safety circuits, overtemperature protection, and probe detection alarm, protect during daily operation. The SpeedServo™ torque compensation keeps the speed constant even if the viscosity changes.

Scope of supply:

Multi-position magnetic stirrer, magnetic stirring bar (Ø 8 x 40 mm)

Scope of supply SET:

Multi-position magnetic stirrer, magnetic stirring bar (Ø 8 x 40 mm), 4 x Pt100 temperature probe, 4 x rod, 4 x clamp

Type	Stirring capacity per position l	Speed range rpm	PK	Cat. No.
AM 4 Digital	20	50 ... 1.500	1	4.701 164
AM 4 Digital SET	20	50 ... 1.500	1	4.701 202

OVERHEAD STIRRERS HEI-TORQUE CORE



For low to medium viscosity solutions

Compact, electronic overhead stirrer for easy operation.

- Can be integrated into closed systems such as smoke hoods, reactors or production systems
- Suitable for low to medium viscosity media
- Quick-action chuck for stirring tools up to 10 mm diameter
- "Max" button for short-term operation at maximum speed
- Timer function
- Digital rotation speed display
- Automatic switch-off with overheating protection

Specifications

Stirring quantity max. (H ₂ O):	25 l
Speed range:	20 ... 2000 rpm
Max. viscosity:	10000 mPas
Motor rating input/output:	105/75 W
Max. torque at stirring shaft:	40 Ncm
Display:	digital
Chuck range:	8 ... 10.5 mm
Dimensions (W x D x H):	70 x 195 x 281.5 mm
Weight:	2.3 kg
Power supply:	230 V, 50/60 Hz
Protection class:	IP 42

Type	Plug type	PK	Cat. No.
Hei-TORQUE Core	EU	1	4.662 304
Hei-TORQUE Core	UK	1	9.812 678
Hei-TORQUE Core	CH	1	9.812 679

IMPELLERS FOR OVERHEAD STIRRERS, STAINLESS STEEL V 2A



Shaft diameter: 8 mm

Blade and Half-Moon Impeller

- These impellers are recommended for applications which require an average speed
- For mixing products with average viscosity



9.816 540



9.816 548



9.816 550

Propeller type impeller

- These impellers are recommended for applications which require an average or high speed
- For mixing products with medium or high viscosity
- These models create an axial flow

Radial Flow Impeller

- These impellers are recommended for applications which require an average speed
- For mixing products with average viscosity up to <500 mPas
- These impellers create a radial flow

Type	Dimensions mm	PK	Cat. No.
Blade stirrer BR 10 (2 blades)	50 x 12	1	9.816 540
Blade stirrer BR 13	70 x 70	1	9.816 543
Turbine stirrer TR 20	Ø 29	1	9.816 548
Turbine stirrer TR 21	Ø 50	1	9.816 549
Propeller stirrer PR 30	Ø 58	1	9.816 550
Propeller stirrer PR 32 *	Ø 33	1	9.816 551
Propeller stirrer PR 32 *	Ø 45	1	9.816 552
Propeller stirrer PR 33 *	Ø 66	1	9.816 553

* with guide ring.

LABORATORY BLENDER WARING® 8010/8011



8011EG

Versatile laboratory mixer ideally suited for general laboratory work. Supplied either with a 1 L stainless steel container or a 1.2 L glass container. Models 8010 EG/ES with mechanical timer (3 minutes).

- Epoxy coated motor housing
- Two-piece lid vinyl/styrene

Scope of supply: Mixer, container (stainless steel or glass) with handle and lid

Type	With	Max. speed rpm	PK	Cat. No.
8010EG	Glass container, 1.2 l	22000	1	9.571 436
8010ES	Stainless steel 1 l	22000	1	9.571 437
8011EG	Glass container, 1.2 l	22000	1	6.284 693
8011ES	Stainless steel 1 l	22000	1	6.284 694

MAGNETIC STIRRING BARS ASTEROID, TRIANGULAR, PTFE



Magnetic stirring bar PTFE-coated, very powerful, for large stirring volumes, viscous media, stirring over distances and with unfavourable bottom shapes, 4x higher torque, significantly higher speeds achievable, no demagnetisation effect, smooth and sealed PTFE coating, FDA-compliant, steam sterilisable at 121 °C. Multiple performance increases for all magnetic stirrers.

Diam. mm	Length mm	PK	Cat. No.
12	25	1	9.646 057
32	40	1	9.646 040

VORTEXER LLG-uniTEXER MULTI



One head - multiple uses

The LLG-uniTEXER multi enables vortexing of different tubes without the need to use an additional adapter. The carrier head accommodates 1 x assay plate, 2 x 50 ml conical tubes, 2 x 15 ml conical tubes, 2 x 5 ml conical tubes, 4 x 1.5/2 ml microcentrifuge tubes, 6 x 0.5 ml and 24 x 0.2 ml microcentrifuge tubes.

The LLG-uniTEXER multi can be operated in continuous mode or touch function for short-term operation.

- Stepless speed adjustment from 0 to 3000 rpm
- Touch function for short-term operation
- Very easy to clean
- Elastomeric feet ensure excellent stability on the bench
- Updated modern design
- Robust housing made of ABS

Scope of supply: Vortexer, 1 x universal attachment, manual

Specifications

Type of movement:	Orbital/vortex
Orbital diameter:	3.7 mm
Speed range:	0 ... 3000 rpm
Dimensions (W x D x H):	171 x 190 x 197 mm
Weight:	3.9 kg
Power supply:	220 ... 240 V, 50 ... 60 Hz

Type	Plug type	PK	Cat. No.
LLG-uniTEXER multi	EU	1	6.263 507
LLG-uniTEXER multi	UK	1	6.263 508

STIRRING BAR RETRIEVERS, PTFE



The LABSOLUTE® stirring bar retrievers in the lengths of 150, 250 and 350 mm are suitable for removing magnetic stirring bars from vessels of all kinds. They have a strong permanent magnet (Alnico 5) with a 10 mm diameter. Due to the PTFE coating the stirring bar retrievers are particularly resistant to chemicals and temperatures.

Length mm	Ø mm	PK	Cat. No.
150	10	1	7.695 120
250	10	1	7.695 121
350	10	1	7.695 122

ACCESSORIES FOR TRIPODS



NEW



4.714 386



4.714 382



4.714 384



4.714 388

Order no.: 4.714 382 and 4.714 384: MicroFix double sleeve with knurled screws.

The MicroFix double sleeve is a particularly space-saving and stable connection solution for confined installation situations, e.g., under laboratory fume cupboards or as an addition to existing racks.

- Made of aluminium or stainless steel
- Right-angled or T-connection of two rods up to Ø 13 mm
- Minimum space requirement: diameter 25 mm, length 30 mm
- Aluminium knurled screws for tool-free tightening by hand

Order no.: 4.714 386: EasySlide double sleeve for one-handed operation, aluminium.

Thanks to the integrated ball bearing, the sleeve glides particularly easily over the stand rod, even during fine adjustments. The design allows for quick, comfortable and safe operation with just one hand, making height adjustment of the stand significantly more efficient and ergonomic.

- Suitable for clamping rods and pole sections up to Ø 12 mm
- Internal plastic ball bearing for particularly smooth gliding
- One-handed operation, sleeve can be easily positioned and fixed with one hand

Order no.: 4.714 388: Tripod plate with flange and slot.

The tripod plate with flange provides a stable base for versatile mounting systems. The integrated rod holder has a slot that allows plates to be clamped in place. Plate made of powder-coated steel, thickness 8 mm, with rubber feet for a secure footing.

- For clamping round rods up to Ø 16 mm
- For clamping plates up to 5 mm

Description	PK	Cat. No.
MicroFix aluminum double sleeve with knurled screws	1	4.714 386
MicroFix stainless steel double sleeve with knurled screws	1	4.714 384
EasySlide double sleeve for one-handed operation	1	4.714 386
Tripod plate with flange and slot	1	4.714 388

SUPPORT RODS MADE OF GALVANISED STEEL



Galvanised steel.
External diameter 12 mm.
Without thread.

Length mm	PK	Cat. No.
500	1	6.701 307
600	1	9.224 126
750	1	9.224 127
1000	1	9.224 130
1250	1	6.081 670
1500	1	9.224 135

SUPPORT RINGS, ZINCKED



Type	Int. diam. mm	Length mm	PK	Cat. No.
Ring	50	160	1	6.239 803
Ring	70	200	1	6.239 507
Ring	100	220	1	6.239 804
Ring, with bosshead	50	70	1	4.659 172
Ring, with bosshead	70	70	1	9.225 081
Ring, with bosshead	100	70	1	6.238 844

ROTARY VANE PUMP RZ 6, PACKAGE

VACUUBRAND.



The powerful, two-stage pump is ideal for applications in laboratories and industrial settings that require a very good ultimate vacuum with medium to high gas throughput. Typical applications include freeze drying, fine vacuum distillation and drying cabinets.

- High flow rate even at vacuum levels approaching ultimate vacuum
- High water Vapour tolerance due to efficient gas ballast
- Very good ultimate vacuum even with gas ballast
- Vacuum tight at switch-off without suction nozzle valve
- Long oil change intervals due to large usable oil volume
- Easy maintenance due to telescopic design

Scope of supply: Rotary vane pump, oil mist filter FO, manual

Type	Flow rate l / min.	Ultimate vacuum mbar	Plug type	PK	Cat. No.
RZ 6+FO	95	0.002	EU	1	6.328 052
RZ 6+FO	95	0.002	UK	1	6.328 054
RZ 6+FO	95	0.002	CH	1	6.328 053

VACUUM MEASURING INSTRUMENT VACUU-VIEW EXTENDED

VACUUBRAND.



The combined rough and fine vacuum gauge VACUU-VIEW extended operates in a particularly wide measuring range from atmospheric pressure to 10^{-3} mbar.

- Chemically resistant, robust vacuum sensors, long service life even with aggressive chemicals
- Display with menu navigation, easy setting of display options such as pressure unit

Specifications

Measuring range:	1100 to 0.001 mbar
Accuracy:	±15% of indicated value in the range from 0.01-5 mbar
Vacuum connection:	KF DN 16/hose nozzle DN 6/10 mm
Dimensions (L x W x H):	103 x 62 x 50 mm
Power supply:	100-230 V, 50/60 Hz

Type	Plug type	PK	Cat. No.
VACUU-VIEW extended	EU, UK, CH, US, AUS, CN	1	6.268 864

VACUUM PUMP SYSTEM LABOPORT® SC 820 G

KMF



Vacuum pump systems consisting of chemically resistant diaphragm vacuum pump, base plate, separator on suction side, high performance condenser on pressure side and vacuum controller for rotary evaporations, distillations and vacuum ovens. Automatic, accurate recognition and monitoring of the boiling point using the integrated ramp function.

- High recovery rates
- Wireless controller via Bluetooth for safe operation from outside closed smoke hoods
- Easy, intuitive control via touchscreen display and rotation knob
- Integrated gas ballast valve
- Four operating modes
- Integrated speed control
- ATEX compliant to (Ex) II 3/-G Ex h IIB+H2 T3 Gc internal atmosphere only

Specifications

Hose connections:	Inlet: ID 8 ... 9.5 mm Outlet: ID 10 mm
Operating pressure:	0.1 bar
Permissible ambient temperature:	5 ... 40 °C
Mains connection:	100 ... 240 V, 50/60 Hz
Protection class:	IP30

Type	Flow rate L / min.	Ultimate vacuum mbar	Plug type	PK	Cat. No.
SC 820 G	20	6	EU/UK/CH	1	4.686 317

WATER JET PUMP, PP

Kartell



This pump will work on pressures up to 10 kg/cm². With built-in, non-return valve to eliminate back flow. Useful for vacuum removal of spilled chemicals, as well as for filter work. Easily dismantled for cleaning.

Description	PK	Cat. No.
Water jet vacuum pump	1	9.303 031



COMPRESSOR STATION SICOLAB MINI



- New assortment
- Maintenance-free
- For producing compressed air
- Low noise



Compact, soundproof compressor for use with compressed air in laboratories. The oil-free plug-and-play compressor unit with integrated carrying handle offers minimal maintenance and maximum flexibility. The SICOLAB mini is equipped with a 2 l pressure receiver, automatic condensate drain, electromagnetic start-up relief, and an operating hours meter.

- Very smooth start-up
- Extremely quiet
- Maintenance-free except for filter replacement
- Compressed air connection via quick coupling directly in the housing
- Oil-free compressor unit
- Air receiver with internal coating
- Pressure reducer
- Pressure switch
- Pressure gauge readable from the outside
- Safety Valve
- On/off switch with fuse

Type	Flow rate L / min.	Pressure bar	Dimensions (W x D x H) mm	PK	Cat. No.
SICOLAB 038 mini	20	7	396 x 347 x 343	1	4.714 489
SICOLAB 062 mini	36	7	396 x 347 x 343	1	4.714 490

EVERYTHING FROM ONE SOURCE

The items featured in this promotional brochure can be found in our online shop, along with our entire portfolio of around 2 million items from over 1,100 brands. If you have any questions or would like to request samples, simply send a short message to sales@thgeyer.com. Discover more promotional offers in our **LABSPECIALS** at www.thgeyer.com and in our e-newsletter.



Technical changes and errors excepted. Our sales and delivery terms apply. Individual offers may not be valid or available in all countries.

www.thgeyer.com

